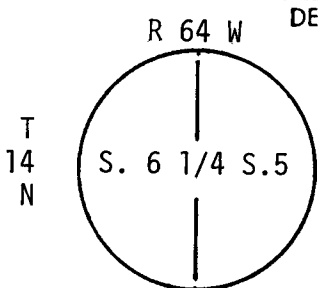


CERTIFIED LAND CORNER RECORDATION



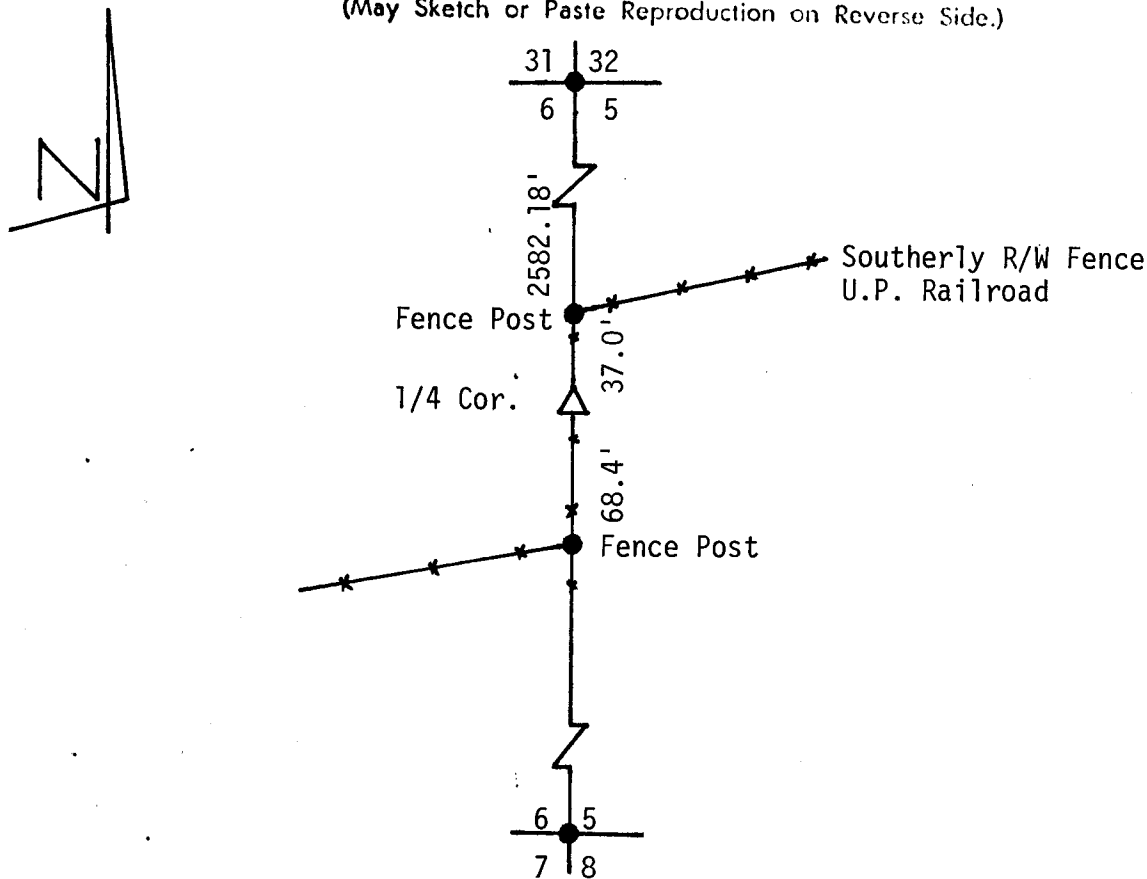
DESCRIPTION OF CORNER EVIDENCE FOUND, AND ORIGINAL RECORD (If known)

G.L.O.: 15" x 8" x 6" Red Sandstone
 Found: 15" x 8" x 6" Red Sandstone firmly set
 with 1/4 etched on east side

DESCRIPTION OF MONUMENT AND ACCESSORIES ESTABLISHED
 TO PERPETUATE THE ORIGINAL LOCATION OF THIS CORNER:

See ties below

SKETCH, WITH COURSE AND DISTANCE TO ADJACENT CORNER IF DETERMINED IN THIS SURVEY.
 (May Sketch or Paste Reproduction on Reverse Side.)



I, Glen L. Roberts certify that I have carefully performed or reviewed the work done on the diagrammed corner as reported on this recordation form and approve the same.

Glen L. Roberts Wyo. P.E. & L.S. 347
 Signature of Surveyor Registration No.

STATE OF WYOMING,
 Office of Clerk and Recorder,
 County of Laramie

622357

This "corner record" was filed for record on the _____ day of _____, 19____, was noted on the cross-index plat and is assigned page No. C-5, in book No. 14-64.

County Official			
Cross Index No. _____	T. _____	R. _____	Mer. _____
_____	T. _____	R. _____	Mer. _____
_____	T. _____	R. _____	Mer. _____
_____	T. _____	R. _____	Mer. _____
_____	T. _____	R. _____	Mer. _____
_____	T. _____	R. _____	Mer. _____
_____	T. _____	R. _____	Mer. _____

C5 14-64